

As at June 30, 2017

Management Discussion and Analysis
Second Quarter, 2017

This Management's Discussion and Analysis ("MD&A") of Eagle Plains Resources Ltd. ("Eagle Plains" or the "Company") is dated August 8, 2017 and provides a discussion of the Company's consolidated financial and operating results for the quarter ended June 30, 2017 with comparisons to previous quarters. This MD&A should be read in conjunction with the quarterly condensed consolidated interim financial statements and accompanying notes and the most recently published annual audited consolidated financial statements and notes.

Business Overview

Eagle Plains Resources Ltd. (EPL: TSX-V) is a junior resource company holding properties in Western Canada for the purpose of exploring for, and the development of mineral resources. Its primary objective is to enhance shareholder value through the acquisition and development of early-stage exploration projects. The Company currently controls over 50 gold, silver, uranium, copper, molybdenum, lead, zinc, gypsum and rare earth ("REE") mineral projects, 4 of which are currently under option agreements with third parties. The Company also provides geological services on its properties optioned to others and properties owned by others through its subsidiary, Terralogic Exploration Inc. ("Terralogic").

During the quarter, the Company continued working on compilation and digitizing of data on several Company projects, carried out field programs on the Kid-Star and Vulcan projects, completed geophysical surveys on the Vulcan and Iron Range properties, as well as providing exploration services to several third parties.

Going forward the Company is being selective in which projects it works on with the preservation of capital a prominent consideration.

Summary of Quarterly Results

Year Quarter	2017 Jun 30	2017 Mar 31	2016 Dec 31	2016 Sep 30	2016 Jun 30	2016 Mar 31	2015 Dec 31	2015 Sep 30
Revenues	\$647,887	\$363,191	\$896,510	\$1,123,333	\$40,480	\$59,408	\$506,751	\$988,387
Investment Income	5,419	5,632	4,617	5,382	5,732	6,442	5,578	6,138
Gain (loss) on sale of investments	15,849	169,138	54,479	220,373	11,035	52,204	(15,665)	(1,100)
Net Profit (Loss)	(68,405)	(119,097)	(222,967)	179,653	(244,737)	(173,811)	(1,434,738)	67,021
Earnings (Loss) per Share - Basic	(0.00)	(0.00)	(0.00)	0.00	(0.00)	(0.00)	(0.02)	0.00
Diluted earnings (loss) per share	(0.00)	(0.00)	(0.00)	0.00	(0.00)	(0.00)	(0.02)	0.00
Assets	7,402,511	6,646,322	6,474,148	7,518,793	6,682,268	6,370,039	6,358,598	8,152,979

Revenues

Revenues per quarter vary depending on the level of exploration activity on projects held by Eagle Plains and under option to third parties and independent projects contracted by TerraLogic.

Investment Income (Loss)

Sales of investments occur throughout the year as determined by management based on market conditions and corporate developments.

Net Profit (Loss)

Profit (loss) for the quarter can be effected significantly by non-operating expenses such as share-based payments, write down of exploration and evaluation assets, impairment charges on investments and non-operating income items such as option proceeds in excess of carrying value and gain or losses on sale of investments.

- The loss in Dec 31, 2015 includes share-based payments of \$66,732, a write down of exploration and evaluation assets of \$1,136,951 and an impairment charge on investments of \$116,370.
- The net profit in Sep 30, 2016 included gains on sale of investments of \$220,373 and a write down of exploration and evaluation assets of \$87,321.
- The loss in Dec 31, 2016 includes a write down of exploration and evaluation assets of \$154,924 and an impairment charge on investments of \$20,000. Also a gain on sale of investments of \$54,479.
- The loss in Mar 31, 2017 includes share-based payments of \$120,366 and gain on sale of investments of \$169,138.
- The loss in Jun 30, 2017 includes share-based payments of \$57,867, income for option proceeds in excess of carrying value of \$135,000 and gain on sale of investments of \$15,849.

RESULTS OF OPERATIONS

For the quarter ended June 30, 2017, the Company recorded a net loss of \$68,405 compared to a net loss of \$244,737 in 2016. The decreased net loss is due to increased revenue of \$647,887 (2016 - \$40,480) plus option proceeds in excess of carrying value of \$135,000 (2016 - \$nil) offset by share-based payments of \$57,867 (2016 - \$2,397).

As at June 30, 2017

Revenue

Revenue from exploration services provided by the Company's wholly-owned subsidiary, Terralogic Exploration Inc., on optioned and third party properties was \$647,887 (2016 - \$40,480) and resulted in a gross profit (loss) for geological services of \$106,556 (2016 - \$(23,056)). The increase in revenue is attributable to more third party projects being worked on than in the prior year quarter.

Investment income of \$5,419 (2016 - \$5,732) is comprised of interest earned on deposits.

Other income of \$9,211 (2016 - \$19,282) is comprised of rental income of \$7,226 (2016 - \$7,911), finance charges of \$(287) (2016 - \$7,545) and other miscellaneous income of \$2,272 (2016 - \$3,826).

The Company included in income, option proceeds in excess of carrying value of \$135,000 (2016 - \$nil). These excess proceeds are the result of shares and cash received pursuant to various option agreements during the period in excess of the carrying value of the respective exploration and evaluation assets.

The Company sold securities during the quarter, receiving proceeds of \$22,360 (2016 - \$151,465) with resultant gains on sales recorded of \$15,849 (2016 - \$11,035). The gains are the result of the junior resource market improving but most of the gains are the result of previously recording an impairment write-down on investments that were required by IFRS.

Expenditures

For the quarter ended June 30, 2017, total geological expenses were \$541,331 (2016 - \$63,536), the increase in direct relation to the increase in revenue.

Operating expenses for the quarter were \$271,480 (2016 - \$234,485). The Company has made it an objective to maintain or reduce overall expenditures and considers the implementation to have been successful to date. Administration costs increased due to more wages coded to administration (\$22,092) than last year and added costs related to TL administration and non-allocable costs (\$19,958). Trade shows, travel and promotion decreased due to increased trade show costs of \$13,960 for 2017 offset by a one-time cost of \$26,820 in 2016 for contracting an IR company to promote EPL.

Non-cash expenses included share-based payments of \$57,867 (2016 - \$2,397) for options issued and vested in the quarter and depreciation of \$21,380 (2016 - \$22,678).

Liquidity and Financial Resources

At June 30, 2017, the Company had working capital of \$3,981,510 (2016 - \$4,188,571). Working capital has decreased due to ongoing operating and exploration costs offset by revenue generated from geological services provided by Terralogic, proceeds received from the sale of securities, cash option payments received and project prepayments received. The Company held cash and cash equivalents of \$3,519,362 (2016 - \$3,104,524).

The Company held receivables of \$485,065 (2016 - \$110,419) primarily for work performed by Terralogic Exploration Inc. on third party contracts. The increase is due to more projects being worked on than in the prior year quarter.

The Company has a BCMETC receivable of \$71,974 (2016 - \$22,974). The increase is the current year accrual.

At June 30, 2017, the Company held investments comprised of publicly traded securities having a market value of \$958,102 (2016 - \$1,054,822). Market value is based on closing quoted bid prices for publicly traded shares and may not approximate trading prices at the time of disposition. Management regularly reviews the portfolio and makes decisions for trading based on current market trends and requirements of the Company.

The Company holds term deposits with maturity dates of greater than three months, classified as long-term, in the amounts of \$69,460 (2016 - \$58,949) as reclamation bonds and term deposits of \$266,570 (2016 - \$264,329), included in the cash and cash equivalents balance of \$3,519,362 (2016 - \$3,104,524), for the guarantee of company credit cards. Term deposits classified as cash and cash equivalents are cashable on demand, as long as credit cards are cancelled.

The Company holds funds in a money market account, cashable on demand, classified as cash and cash equivalents, in the amounts of \$157,666 (2016 - \$156,659).

The Company owns its office building as well as acreage outside of Cranbrook, complete with a house, work shop and drill-core logging facility. Revenue is generated from the rental of these facilities when not used in on-going operations.

The Company has no other long term debt obligations or other commitments for capital expenditures.

As at June 30, 2017

The Company's continuing operations can be financed by cash on hand and/or the liquidation of marketable securities. Expanded operations or aggressive exploration programs would require additional financing, primarily through the public equity markets, or through joint venture partnerships. Circumstances that could affect liquidity are significant exploration successes or lack thereof, new acquisitions, changes in metal prices and the general state of the equity markets for junior exploration companies. The exploration and development programs of the Company are determined by management with all of the above taken into consideration.

Investments

The Company held public traded securities having a market value of \$958,102 (2016 - \$1,054,822) comprised of common shares of third party optionees issued to the Company in accordance with the terms of certain option agreements. The decrease in market value is due to the sales of securities and the decline in junior resource market prices.

The Company sold securities during the quarter, receiving proceeds of \$22,360 (2016 - \$151,465) with resultant gains on sales recorded of \$15,849 (2016 - \$11,035). The gains are the result of the junior resource market improving but most of the gains are the result of previously recording an impairment write-down on investments that were required by IFRS.

The Company holds funds in a money market account, cashable on demand, classified as cash and cash equivalents, in the amounts of \$157,666 (2016 - \$156,569).

The Company holds term deposits of \$2,689,883 (2016 - \$2,233,357) for terms of less than 90 days, cashable on demand, and \$266,570 (2016 - \$264,329), for the guarantee of company credit cards, which are cashable on demand, as long as credit cards are cancelled. All are classified as cash and cash equivalents.

The market value is based on quoted closing bid prices for publicly traded shares and may not approximate trading prices at the time of disposition. Management regularly reviews the portfolio and makes decisions for trading based on current market trends and requirements of the Company.

Exploration and Evaluation Assets

The required detailed schedule of Exploration and Evaluation Assets is included in the Company's condensed consolidated interim financial statements. For details of option agreements on properties refer to Note 7 in the condensed consolidated interim financial statements.

The Company had acquisition and exploration expenditures of \$223,861 (2016 - \$114,625) on exploration and evaluation properties in the quarter and received cash option payments of \$10,000 (2016 - \$nil). The Company recorded in income, option proceeds in excess of carrying value of \$135,000 (2016 - \$nil), the result of cash and share option payments in fulfillment of various option agreements. The Company accrued a BCMETC claim of \$49,000 (2016 - \$nil). As a result of the foregoing, exploration and evaluation assets totaled \$962,058 at June 30, 2017, up from \$662,197 at March 31, 2017. See Schedule 1 – Exploration and evaluation and Schedule 2 – Acquisition and exploration additions.

Work done on Eagle Plains' properties in the quarter consisted of compilation and digitizing of data on several Company projects, undertaking field programs on the Kid-Star and Vulcan projects and completing geophysical surveys on the Vulcan and Iron Range properties.

Following are synopses of current Eagle Plains' properties under option agreements:

British Columbia

Coyote Creek (Gypsum)

On July 1, 2014, the Company entered into an agreement with Secure Minerals Inc. (subsequently amalgamated with Secure Energy (Drilling Services) Inc.) ("Secure"), whereby Secure will reserve the exclusive option over a five year period to purchase the Coyote Creek mineral tenures. In order to exercise the option and acquire a 100% interest in the property Secure is required to make cash payments totaling \$250,000 over the five year period plus a production royalty on material extracted.

The 2,048 hectare property is located 50 km NE of Cranbrook, BC. The claims were acquired to cover a package of black shales and carbonates associated with highly-elevated base- and precious-metal geochemistry and a number of gypsum occurrences.

Hall Lake (Au,Ag)

On September 12, 2011, the Company completed an option agreement whereby Bethpage Capital Corp. ("Bethpage") can earn a 60% interest in Eagle Plains' Hall Lake Property located 40km west of Kimberley, British Columbia. On October 30, 2014, the companies agreed to amend the option agreement whereby all option payment dates were deferred by one year. In consideration, the Company received 100,000 shares of Bethpage. On November 13, 2015, the companies agreed to further amend the option agreement to extend the due dates for payments. In consideration, the Company received \$5,000. Claims comprising the property have since lapsed, rendering the agreement null and void.

June 30, 2017

Saskatchewan

Chico (Au)

On December 9, 2016, the Company entered into an option agreement with Aben Resources Ltd. ("Aben") whereby Aben has the exclusive right to earn an undivided 80% interest in the Chico Gold Project located in Saskatchewan and south of Silver Standard Resources Inc.'s Seabee/Santoy mine complex. Aben may earn an initial 60% interest by incurring \$1,500,000 in exploration expenditures, issuing 1,500,000 common shares and making cash payments totalling \$100,000 over 4 years. Upon earning this 60% interest, Aben may elect to exercise a second option to earn a further 20% interest by incurring an additional \$2,000,000 in exploration expenditures, issuing 1,000,000 common shares, and making \$50,000 cash payments within two years of the date of election.

The 2916ha Chico property is a highly prospective precious-metal exploration project. The core claims were acquired in 2015, with additional claims added in 2016.

In the second quarter 2017, a geophysical survey, funded by Aben, was completed on the property, with results pending.

Project Highlights

- Excellent geology favourable for gold deposits
- Significantly underexplored with encouraging early results
- On-trend with the currently producing Seabee Mine
- Multiple Au showings associated with favourable geology
- Numerous high-grade Au showings focused along a major structure

Fisher Gold Project (U, Au)

On October 5, 2016, the Company entered into an option agreement with Silver Standard Resources Inc. (subsequently renamed SSR Mining Inc.) ("SSO") whereby SSO could earn up to a 60% interest in the property, located in Saskatchewan. To earn a 60% interest over four years, SSO agreed to complete \$4,000,000 in exploration expenditures, make an initial cash payment to Eagle Plains of \$100,000 and make annual cash payments of \$75,000. SSO also agreed to fund the \$400,000 2016 exploration program completed by Eagle Plains, which has been included in the \$4,000,000 exploration expenditures. Once the 60% earn-in has been completed, SSO has a 90-day, one-time option to earn an additional 20% interest (for a total of 80%) by making a cash payment of \$3,000,000 to Eagle Plains, at which time an 80/20 joint-venture will be formed to further advance the property. Eagle Plains will retain a Net Smelter Return ("NSR") ranging from 0.5% to 2.5% depending on the location of the claims as set out in the agreement, subject to reduction on certain claims by underlying NSR agreements. Eagle Plains' NSR may be reduced by 1% at any time upon payment of \$1,000,000 by the joint venture. In addition, Eagle Plains will receive advance royalty payments of \$100,000 annually from the joint venture until commencement of commercial production.

Eagle Plains' Kettle Falls and Eisler Lake projects were incorporated into the much larger Fisher Project in the Seabee Gold Mine/Santoy Lake area as discussed in a [news release dated April 2, 2016](#). Consolidated in 2016, Eagle Plains completed a number of individual agreements with third-parties and received title to individual dispositions in the area north and south of Claude Resources Inc.'s Seabee Mine property located approximately 125km west of LaRonge, Saskatchewan. Combined with Eagle Plains' existing tenures in the area, Kettle Falls and Eisler Lake, the total land area is now 33,460 ha. The project is transected by the Churchill River and is accessible by boat or fixed wing aircraft from Missinipe/Otter Lake, located approximately 100 km west of the property and serviced by an all season gravel road.

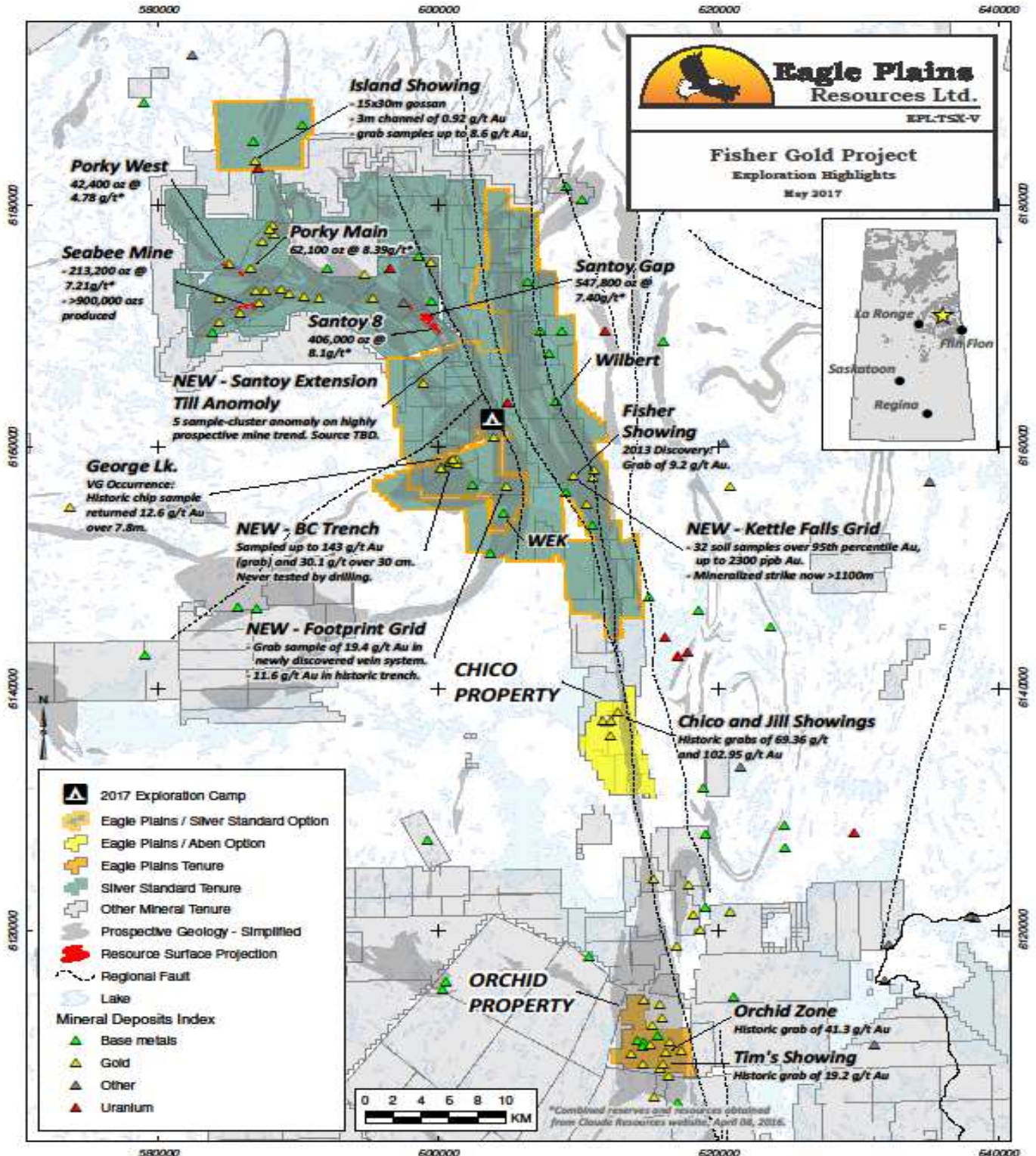
Project Highlights

- Excellent geology favourable for gold deposits
- Significantly underexplored with encouraging early results
- Adjacent to the currently producing Seabee Mine
- Multiple untested geophysical anomalies associated with favourable geology
- Numerous high-grade showings focused along a major structure

During mid 2016 the Fisher project underwent a comprehensive data compilation resulting in the delineation of four underexplored areas of significant interest, and these areas were the focus of the 2016 exploration program. Fieldwork for 2016 included a 3,590 line-km airborne geophysical survey, geological mapping, trenching and till and soil geochemical surveys designed to define high-grade gold targets for upcoming drilling activity. The overall objective of the 2016 exploration program was to identify mineralization similar to that of the nearby Seabee and Santoy deposits. The 2016 Fisher field program verified certain similarities to those seen at the Seabee Gold Operation, including host lithologies and contact relationships, style of mineralization, and presence of multiple fault systems that allowed for high fluid flow regimes.

June 30, 2017

Saskatchewan
 Fisher Gold Project (U, Au) - continued
 Fisher area 2017 exploration highlights map:



June 30, 2017

Saskatchewan

Fisher Gold Project (U, Au) - continued

The Company received a summary report from SSO outlining progress on the 2017 exploration program with the following highlights:

- Detailed geological compilation and geophysical interpretation completed
- Permits approved by Government of Saskatchewan
- 8km winter road completed, providing seasonal land access from the Seabee Gold Operation
- Diamond drill, fuel, heavy equipment and lumber successfully transported to site
- Fieldwork expected to commence in early June and continue until Fall 2017
- 2017 exploration program budget set at approximately \$1,000,000

Fieldwork commenced in June 2017 on the project and will consist of prospecting, detailed geological mapping, extensive soil geochemical sampling, trenching and 3,000-6,000m of diamond drilling. The goal of the 2017 work program is to identify gold mineralization in geological settings similar to those recognized at the Seabee Gold Operation.

Following are synopses of current Eagle Plains' properties with activity but not under option agreements:

British Columbia

Acacia (Au,Ag,Pb,Zn)

On July 24, 2017, the Company mobilized field crews to commence 2017 exploration activity on the 4715 ha Acacia property, located 45 km north of Kamloops in central British Columbia. The core property area has been held by Eagle Plains since 2001 and carries no underlying royalties or encumbrances.

The Acacia property is considered to have excellent potential for hosting volcanogenic massive sulphide ("VMS") deposits. These deposits typically contain both base and precious metals, and occur in clusters and/or stacked lenses. The property covers a stratigraphic assemblage which hosts a number of nearby, on-strike base and precious-metal deposits including the Rea Gold, K7, Twin 3 and past-producing Samatosum Mine, located approximately 4km northwest of current property boundaries. Past drilling within target stratigraphy northwest of current property boundaries returned values from trace quantities up to 10.6 g/t Au, 335.3 g/t Ag, 3.13 % Zn, 2.74% Pb, and 0.55% Cu over 2.37m. *Management cautions that past results or discoveries on proximate land are not necessarily indicative of the results that may be achieved on the Acacia property.*

2017 fieldwork follows a comprehensive compilation by Eagle Plains of data collected historically on the property by past operators which include 12,037 soil, 1131 rock and 51 silt samples, 56 trenches, 26 drill-holes and numerous geological and geophysical surveys from past operators Homestake Minerals, Omni Resources, Falconbridge Copper and Esso Minerals. Current fieldwork will consist of geologic mapping and a soil geochemical survey designed to infill gaps in existing coverage.

Iron Range (Au,Ag,Pb,Zn)

The 70,473 ha Iron Range project is located near Creston, BC, and is owned 100% by EPL, subject to a 1% NSR on a portion of the claim group. A well-developed transportation and power corridor transects the southern part of the property, including a high-pressure gas pipeline and a high-voltage hydro-electric line, both of which follow the CPR mainline and Highway 3. The rail line provides efficient access to the Teck smelter in Trail, B.C.

Prior to the acquisition and initial involvement of Eagle Plains in 2001, the property had seen little systematic exploration for other than iron resources known to exist on the property since the late 1800s. Since 2001, Eagle Plains and its partners have completed 17,226m in diamond drilling in 70 holes, collected 2,482 line-km of airborne and surface geophysical data and analysed 10,053 soil geochemical samples, 495 rock samples and 5,749 drill core samples.

Management of Eagle Plains consider the Iron Range project to hold excellent potential for the presence of both iron-oxide copper-gold ("IOCG") and Sullivan-style lead-zinc-silver sedimentary-exhalative ("sedex") mineralization. The Sullivan Mine was discovered in 1892 and is one of the largest sedex deposits in the world. Over its 100+ year lifetime, Sullivan produced almost 300 million ounces of silver, 36 billion pounds of lead, zinc and other associated metals, collectively worth over \$40B at current metal prices. *Management cautions that past results or discoveries on proximate land are not necessarily indicative of the results that may be achieved on the Iron Range property.*

Initial field work by Eagle Plains consisted of a property-scale, wide-spaced soil geochemical survey, rock sampling and geological mapping. The work identified IOCG indicators associated with the main Iron Mountain structure in the area of the historic trenches and along the projections of structural splay. Fieldwork also identified SEDEX-style geochemical anomalies along the surface trace of the Lower-Middle Aldridge Contact (LMC), the time-equivalent to the Sullivan Ag-Pb-Zn deposit. Subsequent work by Eagle Plains included a high resolution VTEM and MAG geophysical survey, detailed soil sampling and trenching.

In 2005, Eagle Plains completed four drill-holes to test the LMC in the central portion of the property. The holes intersected "Sullivan smoke" including albite and tourmaline alteration, sedimentary fragmental, and disseminated sulphides at or near Sullivan time. One

June 30, 2017

British Columbia - continued
Iron Range (Au,Ag,Pb,Zn) - continued

of the holes returned assay values of 3.8 g/t Au and 46 g/t Ag over 2.0 m in a fault breccia which is now understood to represent the first intersection of the Talon Zone.

Between 2007 and 2009, the exploration efforts shifted to the evaluation of the main IMFZ in the area of the historic Cominco trenches. Drilling intersected 7.0 m of bonanza-grade gold near the O-Ray Iron Oxide showing (see O-Ray Zone for details). Follow up drilling in 2009 intersected 1.0 m of 22.5 g/t Au.

Drilling in 2010 was designed to initially test a large 1.6 km x 1.2 km ovoid geophysical anomaly in the SW portion of the property deemed to be near surface, conformable to bedding and to lie at or near the Lower-Middle Aldridge Formation contact (LMC) or "Sullivan-time". To the east of the geophysics anomaly, the tenth borehole of the program intersected two zones of intensely altered

and mineralized bedrock. Semi-massive to massive vein and breccia hosted sulphide mineralization including galena and sphalerite were reported from 192.0 m to 206.0 m and 277.5 m to 279.5 m (Talon zone). The eastern contact of the lowermost massive sulphide interval is truncated by a fault.

Sample Type	Results	Description of Zone and Sampling
Drill Intercept	14m* @ 5.1 g/t Au, 1.86% Pb, 2.1% Zn, 75.3 g/t Ag	192m to 206m vein-hosted massive sulphide
Drill Intercept	56.5m* @ 1.9 g/t Au, 0.44% Pb, 0.59% Zn, 21.5 g/t Ag	224m to 280.5m overlain by disseminated and breccia hosted mineralization within intensely silica-k-feldspar altered rock.
Drill Intercept	2m* @ 12.8 g/t Au, 4.18% Pb, 5.06% Zn, 122.5 g/t Ag and elevated Cd, Sb, Sn, Bi and Cu	Included within the 56.5m intercept - 277.5m to 279.5m massive-sulphide truncated by a fault

* the intersections are not representative of true thickness

The Talon Zone is located within the greater "Canyon" target area and forms an elongate breccia approaching 50 m wide along a NE trend approximately 400 m west of the IMFZ. Base and precious metal mineralization (Ag-Au-Pb-Zn) is associated with texture destructive silica-K-feldspar-sericite-carbonate alteration. Structures are observed as zones of brittle deformation from one metre up to tens of metres wide which directly control the distribution of mineralization. The structural setting, geochemical signature and associated alteration minerals are indicative of an intermediate sulphidation epithermal hydrothermal system. The source of the metals remains to be determined; however the mineralization observed to date is located within +/- 150 metres of the prolific LMC.

During 2011, 19 diamond-drill holes were completed at the Talon Zone to further define Ag-Au-Pb-Zn mineralization at the Talon Zone. In addition to diamond drilling, extensive soil sampling, geological mapping and geophysics (VTEM, AGG, ZTEM) were completed on the property with a focus on defining potential SEDEX-style exploration targets.

The 2012 exploration program consisted of 2490 m drilling in the ROW and Talon zones targeting high-priority geophysical targets, historical geochemical anomalies and the inferred strike extension of the Talon Zone. Exploration also included geological mapping and geochemical sampling focused on high-priority geophysical targets coincident with historical geochemical anomalies.

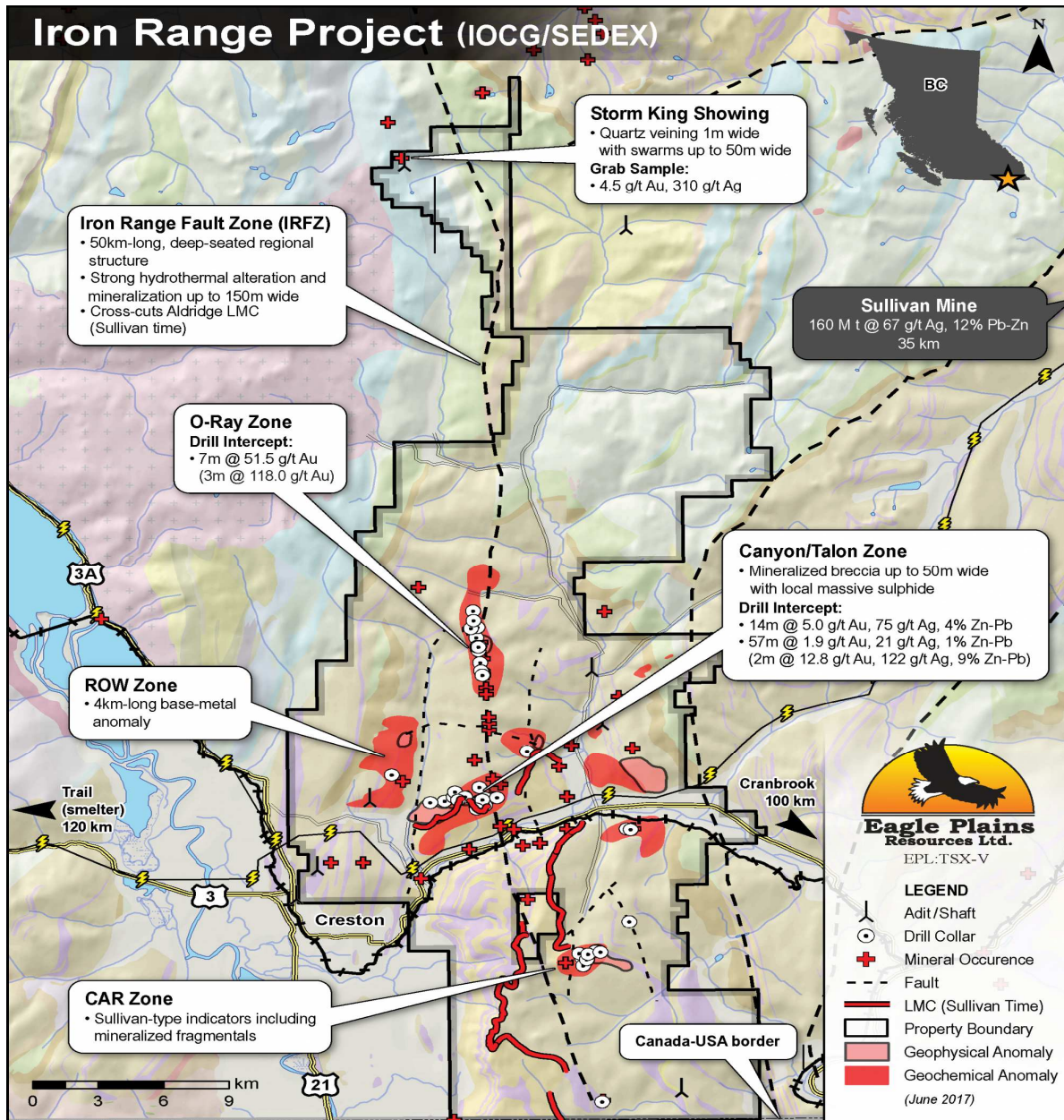
In 2013, Eagle Plains collaborated with the Mineral Deposit Research Unit (MDRU) from the University of British Columbia to evaluate the potential of the IRFZ to host large IOCG deposits. The project was designed to assess if economic quantities of metals were mobile during the various stages of hydrothermal alteration observed within the IRFZ. Results from the research project suggest that future IOCG exploration should focus on hematite-bearing precious metal enriched IOCG systems analogous to Tennant Creek or some of the Cloncurry deposits.

In 2014, work focused on the compilation of 117 years of exploration data into a single GIS database containing 20,202 soil samples, 585 rock samples, 4,336 line-km of geophysical data from 7 individual surveys and 80 drill holes totalling of 20,300 m. Analyses of this data resulted in the identification of three distinct high-priority target areas. The Car, Canyon/Talon and Golden Cap/O-ray areas are highly prospective for SEDEX, base and precious metal mineralization and IOCG style mineralization. Other 2014 work included the completion of a 3-D geological model for the Talon Zone. In addition, a field program was conducted on the property which saw the collection of 10 heavy mineral concentrate samples (HMC) over a number of the target areas.

In 2016, a field program was completed to assess several areas of the property. Field work was directed toward extending soil coverage in areas of the property with open anomalies. High priority areas included Anchor Creek east to the Pyromorphite mineral occurrence. Bulk stream sediment samples were collected from four drainage basins within the northern portion of the property to provide baseline data to further constrain detailed mapping, prospecting and geochemical surveys. Bedrock mapping was completed at the Talon Zone to further constrain the geologic model and facilitate borehole planning. The active exploration permit was amended in 2016 to incorporate new recommendations for exploration activity in proximity to the Talon/Canyon target area.

June 30, 2017

British Columbia - continued
Iron Range (Au,Ag,Pb,Zn) – continued



Future exploration work is recommended and should include, but is not limited to:

- HMC/RIM surveys for gold grain analysis and resistive indicator minerals to delineate prospective zones of Epithermal Au-Ag-Pb-Zn/IOCG/SEDEX mineralization
- Re-logging, sampling and alteration mapping of historic diamond drill core. Alteration mapping should include detailed petrographic analysis of each identified alteration assemblage, K-feldspar staining, and a radiometrics (spectrometer) orientation survey focused on delineating zones of known K-feldspar alteration
- Prospecting of the soil anomalies identified west of the Pyromorphite mineral occurrence and north of the Union Jack mineral occurrence
- Geologic Mapping and Prospecting
- Geochemical surveys as both infill and outside of current areas of coverage

June 30, 2017

British Columbia - continued

Iron Range (Au,Ag,Pb,Zn) – continued

- Geophysics Surveys:
 - Petrophysical characterization of historic diamond drill core where possible
 - Ground IP survey of the Canyon/Talon Zone target area to assess the potential fertility of structures along strike from the Talon Zone
- 3D modelling
- Diamond Drilling:
 - Talon Zone: 2,000 meters
 - Golden Cap Zone: 2,000 metres

On May 29, 2017, the Company mobilized field crews to commence a ground-based Induced Polarization “I.P.” geophysical program covering a minimum of 23 line-km overlying the Talon Zone. The program is designed to further refine the current interpretation of geological features controlling mineralization within the Talon Zone.

All components of future exploration programs are scalable, and will be revised according to available budget resources and exploration goals.

Vulcan (Ag,Pb,Zn)

The 1550 ha Vulcan Property is located approximately 35 km NW of the historic Sullivan Mine at Kimberley, B.C. The claims include four strata-bound Pb/Zn and Cu showings within the Aldridge Formation and hold the potential to host significant sedimentary-exhalative (“SEDEX”) mineralization. The exploration target is Sullivan-type stratiform sediment-hosted massive sulfide deposition. The Property is owned 100% by Eagle Plains and is considered to hold significant potential to host silver-lead-zinc mineralization similar to that at the world-class Sullivan deposit.

Since acquiring the initial claims on the property in 2005, Eagle Plains has completed an extensive compilation of all existing data, followed in 2006 by a 125 line-km helicopter-borne time-domain geophysical survey flown at 200m spacing. In 2011, EPL and partner Navy Resources conducted a 318 line-km helicopter gravity gradiometry (AGG) survey of the property. Geochemical and geological mapping programs were conducted by Eagle Plains in 2012 and 2014.

In August 2017, the Company mobilized field crews in follow-up to a successful 2016 program which consisted of geological mapping and prospecting, geochemical and ground-based geophysical surveys. A total of 539 soil and 57 rock samples were collected throughout the course of work. The 2016 program resulted in the re-interpretation and relocation of the surface projection of the Lower Middle Aldridge Contact (“LMC”)—the stratigraphic time horizon which hosts the world-class Sullivan deposit, and the identification of a pronounced, 1.6km-long coincident lead/zinc anomaly which overlies the inferred trace of the LMC. Current exploration activity is designed to further define drill targets and to test geochemical and geophysical features outlined earlier on the property. The project is currently permitted for drilling.

Saskatchewan

Orchid (U, Au)

The Orchid project was staked by Eagle Plains in 2014 and was optioned to North Arrow Minerals who explored the property for its diamond potential until relinquishing the option in 2016. The property has historically been explored for its gold potential since the mid-1980s and contains numerous high-grade mineral occurrences grading from trace values to highs of 41.3 g/t (Orchid Au Zone), 19.2 g/t Au (Tim’s Showing), 12.7 g/t (Eureka), and 8.5 g/t (Terra Zone) as well as significant Ag (144.5 g/t), Cu (3.9%), and Mo (2600 ppm) - *all values returned from grab samples*.

The property is located in east-central Saskatchewan, approximately 140 km east of LaRonge and 15 kilometers east of North Arrow’s Pikoo diamond discovery. The 2250 ha property is situated along the same structural corridor and within rocks similar to those currently being mined at Seabee. The property is considered to hold significant potential to host gold mineralization.

The Orchid property has seen extensive historical work including geological mapping, prospecting, soil sampling, trenching and ground-based geophysics with the last significant work programs reported in 1995. A single drill hole which was completed in the Tim’s Au Zone area returned 1.3 g/t Au over two separate 0.5 meter intervals. Results from historical work on the Orchid property’s mineral occurrences include:

SMDI 2646 Orchid Zone

SAMPLE #	Au in g/t	Description
34075	10.03	Orchid grab sample pyritic quartz veins with tourmaline
34080	41.36	Orchid grab sample pyritic quartz veins with tourmaline
34914	36.0	Grab sample 230 m northwest of Orchid

June 30, 2017

Saskatchewan

Orchid (U, Au) - continued

SMDI 2645 Tim's Au / South Lariviere

SAMPLE #	Au in g/t	Description
34012	19.2	Tim's Showing grab sample pyritic quartz veins with tourmaline
35942	0.9	Grab sample 320 m southwest of Tim's showing

Many of the other gold occurrences on the Property returned values in excess of 1 g/t Au in both rock and soil samples, with historical records indicating the presence of visible gold in some of the panned soil samples. *Management cautions it has neither verified nor confirmed these results, which are considered to be historical in nature.*

On May 31, 2017, the Company mobilized field crews to carry out a 2-3 week exploration program to build on previous work which has indicated certain similarities to those seen at the Seabee Gold Operation, including host lithologies and contact relationships, style of mineralization, and presence of multiple fault systems that allowed for high fluid-flow regimes.

NSR Royalties

Eagle Plains holds valuable royalties on a number of projects in western Canada covering a broad spectrum of metals and industrial mineral projects including gold, silver, base-metals, uranium, diamonds and gypsum. Following are Eagle Plains' properties sold or optioned with attached NSR's:

NSR to EPL Property	Payor	NSR	Buydown
Carter Lake	Cameco Corporation	2.0%	1%-\$1M
Carter Lake	ALX Uranium Corp.	2.0%	1%-\$1M
Coflin Lake	Ryan Kalt	2.0%	1%-\$1M
Carter Lake	Cameco Corporation (ALX)	2.0%	1%-\$1M
Coyote Creek	Secure Minerals Inc.	\$1.50/ton	n/a
Jodi/Sphinx	Touchdown Resources Ltd	1.0%	n/a
Orchid	North Arrow Minerals Inc.	2.0%	1%-\$1M
Stevenson River	T Young et al	1.0%	n/a
LaRonge Gold belt	Greywacke Exploration Ltd.	2.5%	1%-\$1.05M
McQuesten	Alexco Resources Ltd.	0.5-2.0%	n/a
Various	ALX Uranium Corp.	2.0%	1%-\$1M
Virgin River (Tarku)	Tarku Resources Ltd.	2.0%	1%-\$1M
Fisher	Silver Standard Resources Ltd.	0.5-2.5%	1%-\$1M
Chico	Aben Resources Ltd.	0.5%	0.5%-\$1M
Bar	Barkerville Gold Mines Ltd.	2.0%	n/a
Shea	Areva Resources Canada Inc./UEX Corporaton	2.0%	1%-\$1M
AB	Blind Creek Resources Inc.	2.0%	1%-\$1M/1%-\$7M

Shareholders' Equity

Accumulated other comprehensive income (loss) records the unrealized gains and losses on marketable securities and the Company recorded an adjustment for unrealized income of \$103,082 (2016 – \$533,718) in the period and reclassified other comprehensive income of \$15,849 (2016 – \$11,035) due to investment sales in the period, resulting in an accumulated other comprehensive income balance of \$433,684 (2016 – \$618,204).

The company granted 500,000 options at an exercise price of \$0.20, expiring June 15, 2022, to the new director in the period and recorded share-based payment of \$55,925 (2016 - \$nil). 25,000 (2016 – 75,000) options vested in the period and \$1,941 (2016 - \$2,397) was recorded as share-based payments.

Transactions with Related Parties

The Company was involved in the following related party transactions during the period:

- (a) The Company is related to Apex Diamond Drilling Ltd. ("Apex") through ownership of 10% of the shares of Apex. At June 30, 2017 Eagle Plains' interest in Apex is as follows:

June 30, 2017

Transactions with Related Parties - continued

	2017	2016
Shareholder loan, interest free, no specific terms of repayment	\$ 20,000	\$ 20,000
Shares in Apex	20	20
	\$ 20,020	\$ 20,020

During the period the Company had no transactions with the related company.

- (b) The Company was related to Omineca Mining and Metals Ltd. (“OMM”) through common directors until May 11, 2017. During the period the Company had the following transactions with the related company:

	2017	2016
Administrative services provided by EPL	\$ 3,015	\$ 10,211
Investor relations services provided by EPL	3,328	6,026

At June 30, 2017, \$145,991 (2016 - \$78,937) is included in accounts receivable. The Company recorded an impairment allowance of \$145,991 (2016 - \$78,937) in respect of the amount receivable from OMM.

- (c) Included in professional fees is \$4,973 (2016 - \$9,108) paid or accrued for legal fees to a law firm of which one of the directors, Darren Fach, is a partner.

(d) **Compensation to key management**

Compensation to key management personnel in the period:

	2017	2016
Administration costs		
Management fees	\$ 30,167	\$ 25,667
Wages and benefits	20,702	13,638
Professional fees	9,100	6,300
Share-based payments	55,925	-
	\$ 115,894	\$ 45,605

- (e) Included in professional fees is \$9,100 (2016 - \$6,300) paid or accrued for accounting services to a director and officer of the Company. At June 30, 2017, \$nil (2016 - \$2,481) is included in accounts payable and accrued liabilities.
- (f) Included in administration expenses is \$30,167 (2016 - \$25,667) paid or accrued for management services to a company owned by a director and officer of the Company.
- (g) Included in administration expenses is \$20,702 (2016 - \$13,638) paid or accrued for wages and benefits to a director and officer of the Company.
- (h) The Company issued 500,000 (2016 – nil) options, with exercise prices of \$0.20 (2016 - \$nil) and expiry dates of June 15, 2022 (2016 – nil), to a director of the Company and recorded share-based payments of \$55,925 (2016 - \$nil).

All related party transactions in the normal course of business have been measured at the agreed upon exchange amounts, which is the amount of consideration established and agreed to by the related parties. Amounts due to/from the related parties are non-interest bearing, unsecured and have no fixed terms of repayment unless otherwise specified.

Disclosure of Management Compensation

The Corporation has a standard compensation agreement to pay all directors an annual retainer fee of \$5,000 and a stipend of \$250 per board or committee meeting attended as compensation for services rendered as directors. No payments were made in the quarter to directors.

The Corporation has standard compensation agreements with certain Officers to pay a total of \$25,167 (2016 - \$21,416) per month as compensation for services as an officer of the Corporation. Payments totalling \$59,647 (2016 - \$43,216) were paid out in the quarter.

The Corporation has a Stock Option Plan (the “Plan”) to provide an incentive for directors and officers of the Corporation to directly participate in the Corporation’s growth and development by providing them with the opportunity through options to purchase common shares to acquire an increased financial interest in the Corporation. At the discretion of the Corporate Governance and Compensation Committee (“CGCC”) options are granted to individuals taking into account the Corporation’s long-range objectives, comparing and

June 30, 2017

Disclosure of Management Compensation- continued

matching in most cases option grants and holdings for similar positions in the comparator group, and previous grants to such individuals.

New Director to Board of Directors

On June 15, 2017, the Company announced the appointment of Bill Bennett, B.A., LL.B., to the Board of Directors, effective immediately (see news release June 15, 2017). Mr. Bennett recently served as the Minister of Mines for the Province of British Columbia, holding a seat in the B.C. Legislature for 16 years. Concurrent with Mr. Bennett's appointment, the Board of Directors has accepted the resignation of Mr. Ron Netolitzky, who has served the Company for over 13 years. Mr. Netolitzky will continue to provide direction to Eagle Plains as a member of our Advisory Board, joining Robert Termuende, a founding board member - now retired.

Off-Balance Sheet Arrangements

The Company has not entered into any off-balance sheet transactions.

Critical Accounting Estimates

The preparation of financial statements requires management to make estimates and assumptions that affect the reported amounts of assets and liabilities and disclosure of contingent assets and liabilities at the date of the financial statements and the reported amounts of revenues and expenses during the reporting period. The estimates and associated assumptions are based on historical experience and various other factors that are believed to be reasonable under the circumstances, the results of which form the basis of making the judgments about carrying values of assets and liabilities that are not readily apparent from other sources. Financial results as determined by actual events could differ from these estimates.

The estimates and underlying assumptions are continuously evaluated and reviewed on an ongoing basis. Revisions to accounting estimates are recognized in the period in which the estimate is revised if the revision affects only that period or in the period of the revision and further periods if the revision affects both current and future periods.

Significant areas requiring the use of management estimates include impairment of exploration and evaluation assets; provision of reclamation and environmental obligations; impairment of property and equipment; useful lives for depreciation of property and equipment; and inputs used in accounting for share-based payments in profit or loss.

Areas of significant judgment include the classification of financial instruments; recognition of deferred income taxes and contingencies reported in the notes to the consolidated financial statements; determining when the decline in fair value of investments is considered to be prolonged or significant; and the classification of exploration and evaluation expenditures, which requires judgment in determining whether it is likely that future economic benefits will flow to the Company as this would result in the properties being shown as mines under construction instead of exploration and evaluation assets.

Financial Instruments

The Company carries various financial instruments and it is management's opinion that the Company is not exposed to significant risks arising from these financial instruments. Substantially all of the Company's cash is held at two recognized Canadian National financial institutions. As a result, the Company is exposed to all of the risks associated with these institutions. See Note 12 in the condensed consolidated interim financial statements.

Disclosure of Outstanding Share Data

The Company has an unlimited number of common shares without nominal or par value authorized for issuance.

At August 8, 2017, the Company had 84,313,669 (2016 – 84,313,669) common shares issued and outstanding. There are no other classes of shares outstanding.

At August 8, 2017, the Company has 8,125,000 (2016 – 7,200,000) stock options outstanding with expiry dates from July 12, 2018 to June 15, 2022. The Company granted 500,000 options in the period and 90,000 options expired in the period.

At August 8, 2017, the Company has no (2016 – nil) warrants outstanding.

A detailed schedule of Share Capital is included in Note 8 to the Company's condensed consolidated interim financial statements.

Accounting Policies

The condensed consolidated interim financial statements for the Company for the period ending June 30, 2017 are prepared in

June 30, 2017

Accounting Policies - continued

accordance with International Financial Reporting Standard 34 ("IAS 34"), Interim Financial Reporting, using accounting policies which are consistent with International Financial Reporting Standards ("IFRS") as issued by the International Accounting Standards Board ("IASB") and the International Financial Reporting Interpretations Committee ("IFRIC"). Refer to Note 3 to the condensed consolidated interim financial statements for information pertaining to accounting changes effective January 1, 2017.

Risk Factors

Exploration and Development

Resource exploration and development is a speculative business, characterized by a number of significant risks including, among other things, unprofitable efforts resulting not only from the failure to discover mineral deposits but also from finding mineral deposits that, though present, are insufficient in quantity and quality to return a profit from production. The Company's properties are in the exploration stage. There is no assurance that the Company's mineral exploration and development activities will result in any discoveries of commercial bodies of minerals. The long-term profitability of the Company's operations will in part be directly related to the costs and success of its exploration and development programs, which may be affected by a number of factors.

Development of the Company's properties will only be potentially pursued if favourable exploration results are obtained that demonstrate that potential economic extraction of minerals is justified.

The business of exploration for minerals and mining involves a high degree of risk. Whether a mineral deposit can be commercially viable depends upon a number of factors, including, but not limited to, the particular attributes of the deposit, including size, grade and proximity to infrastructure; metal prices, which can be highly variable; and government regulations, including environmental and reclamation obligations. Few properties that are explored are ultimately developed into profitable, producing mines.

Substantial expenditures are required to establish the continuity of mineralized zones through drilling and to develop and maintain the mining and processing facilities and infrastructure at any site chosen for mining. No assurance can be given that funds required for any proposed development of the Company's properties can be obtained on a timely basis, if at all.

The marketability of any minerals acquired or discovered by the Company in the future may be affected by numerous factors which are beyond the control of the Company and which cannot be accurately predicted, such as market fluctuations, the proximity and capacity of milling facilities, mineral markets and processing equipment, and such other factors as government regulations, including regulations relating to royalties, allowable production, importing and exporting of minerals, and environmental protection, the combination of which may result in the Company not receiving an adequate return on investment capital.

There is no assurance that the TSX-V or any regulatory authority having jurisdiction will approve the acquisition of any additional properties by the Company, whether by way of option or otherwise.

Financial Capability and Additional Financing

The Company has limited financial resources, with its only source of operating income being cash and share payments from current option agreements and revenues generated from the exploration work of its wholly-owned subsidiary, TerraLogic Exploration Inc., and have no assurance that additional funding will be available to it for further exploration and development of its projects. There can be no assurance that it will be able to obtain sufficient financing in the future to carry out exploration and development work on its projects. The ability of the Company to arrange additional financing in the future will depend, in part, on the prevailing capital market conditions as well as the business performance of the Company.

Mining Titles

There is no guarantee that the Company's title to or interests in the Company's property interests will not be challenged or impugned. The acquisition of title to mineral properties is a very detailed and time-consuming process. Title to the area of mineral properties may be disputed. There is no guarantee of title to any of the Company's properties. The Company's properties may be subject to prior unregistered agreements or transfers and title may be affected by undetected defects. With the exception of certain Crown Granted Mineral Claims and legacy tenures, the Company has not surveyed the boundaries of its properties and consequently the boundaries may be disputed.

There can be no assurance that the Company's rights will not be challenged by third parties claiming an interest in the properties.

Management

The success of the Company is currently largely dependent on the performance of its officers. The loss of the services of these persons could have a materially adverse effect on the Company's business and prospects. There is no assurance the Company can maintain the services of its officers or other qualified personnel required to operate its business. Failure to do so could have a material adverse effect on the Company and its prospects.

June 30, 2017

Risk Factors - continued

Conflicts of Interest

Certain directors and officers of the Company are, and may continue to be, involved in the mining and mineral exploration industry through their direct and indirect participation in corporations, partnerships or joint ventures which are potential competitors of the Company. Situations may arise in connection with potential acquisitions in investments where the other interests of these directors and officers may conflict with the interests of the Company. Directors and officers of the Company with conflicts of interest will be subject to the applicable corporate and securities legislation, regulation, rules and policies.

Dilution

There are a number of outstanding options and warrants pursuant to which additional common shares of the Company may be issued in the future. Exercise of such options and warrants may result in dilution to the Company's shareholders. In addition, if the Company raises additional funds through the sale of equity securities, shareholders may have their investment further diluted.

History of Losses and No Assurance of Profitable Operations

The Company has incurred a loss since inception. There can be no assurance that the Company will be able to operate profitably during future periods. If the Company is unable to operate profitably during future periods, and is not successful in obtaining additional financing, the Company could be forced to cease its exploration and development plans as a result of lacking sufficient cash resources.

The Company has not paid dividends in the past and has no plans to pay dividends for the foreseeable future.

Uninsurable Risks

In the course of exploration, development and production of mineral properties, certain risks, and in particular, unexpected or unusual geological operating conditions may occur. These unexpected or unusual conditions may include rock bursts, cave-ins, fires, flooding and earthquakes. It is not always possible to fully insure against such risks and the Company may decide not to take out insurance against such risks as a result of high premiums or other reasons. Should such liabilities arise, they could reduce or eliminate any future profitability and result in increasing costs and a decline in the value of the securities of the Company.

Environmental and Safety Regulations and Risks

Environmental laws and regulations may adversely affect the operations of the Company. These laws and regulations set various standards regulating certain aspects of health and environmental quality. They provide for penalties and other liabilities for the violation of such standards and establish, in certain circumstances, obligations to rehabilitate current and former facilities and locations where operations are or were conducted. Furthermore the permission to operate could be withdrawn temporarily where there is evidence of serious breaches of health and safety, or even permanently in the case of extreme breaches.

Significant liabilities could be imposed on the Company for damages, clean-up costs or penalties in the event of certain discharges into the environment, environmental damage caused by previous owners of acquired properties or non-compliance with environmental laws or regulations.

Fluctuating Mineral Prices

The Company's revenues, if any, are expected to be in large part derived from the sale of gold, copper, and possibly other metals. The prices of gold, copper, and other commodities have fluctuated widely in recent years and are affected by factors beyond the control of the Company including, but not limited to, economic and political trends, currency exchange fluctuations, economic inflation and expectations for the level of economic inflation in the consuming economies, interest rates, global and local economic health and trends, speculative activities and changes in the supply of gold and copper due to new mine developments, mine closures, and advances in various production and technological uses for gold and copper. All of these factors will have impacts on the viability of the

Company's exploration projects that are impossible to predict with certainty.

Competitive Conditions

The mining industry is intensely competitive in all its phases, and the Company competes with other companies that have significantly greater financial resources and technical facilities. Competition in the precious metals mining industry is primarily for mineral rich properties which can be developed and produced economically; the technical expertise to find, develop, and produce such properties; the labour to operate the properties; and the capital for the purpose of financing development of such properties. Many competitors not only explore for and mine precious metals, but conduct refining and marketing operations on a world-wide basis and some of these companies have much greater financial and technical resources than the Company. Such competition may result in the Company being unable to acquire desired properties, recruit or retain qualified employees or acquire the capital necessary to fund its operations and develop its properties. The Company's inability to compete with other mining companies for these mineral deposits could have a material adverse effect on the Company's results.

Price Volatility of Publicly Traded Securities

In recent years, the securities markets in the United States and Canada have experienced high levels of price and volume volatility, and the market prices of securities of many companies have experienced wide fluctuations in price which have not necessarily been related

June 30, 2017

Risk Factors - continued

to the operating performance, underlying asset values or prospects of such companies. There can be no assurance that continual fluctuations in price will not occur. Any quoted market for the common shares may be subject to market trends generally, notwithstanding any potential success of the Company in creating revenues, cash flows or earnings.

Inadequate Infrastructure May Affect the Company's Operations

Mining, processing, development and exploration activities depend, to one degree or another, on adequate infrastructure. Reliable roads, bridges, power sources and water supply are important determinants, which affect capital and operating costs. Unusual or infrequent weather phenomena, sabotage, community, government or other interference in the maintenance or provision of such infrastructure could adversely affect the Company's operations, financial condition and results of operations.

Risks and Uncertainties

Management's estimates of mineral prices, mineral resources and operating costs are subject to certain risks and uncertainties which may affect the Company's operation. Although management has made its best estimate of these factors, it is possible that material changes could occur which may adversely affect management's estimate of operating requirements. The Company's success will be dependent upon the extent to which it can discover mineralization or acquire mineral properties and the economic viability of developing its properties. Substantially all of the Company's operating and exploration funding must be derived from external financing. Should changes in equity market conditions prevent the Company from obtaining additional external financing; the Company will need to review its exploration and development programs and future planning.

Other MD & A Requirements

Additional information relating to the Company is available on the SEDAR website: www.sedar.com under "Company Profiles" and "Eagle Plains".

Forward Looking Statements

"All statements other than those of a historical nature are 'forward-looking statements' that may involve a number of unknown risks, uncertainties and other factors. Although the Company believes the expectations expressed in such forward-looking statements are based on reasonable assumptions, such statements are not guarantees of future performance and actual results or developments may differ materially from those in forward-looking statements."

Subsequent Events

On July 27th, 2017, the Company and Blind Creek Resources Ltd. ("Blind Creek") executed a formal agreement whereby Blind Creek has the exclusive right to purchase a 100% undivided interest in the 3,000 ha AB Zinc Property (the "Property") located 263 km west of Norman Wells, N.W.T. Under the terms of the agreement Blind Creek can acquire a 100% interest in the Property by issuing to Eagle Plains a total of 2,000,000 common shares of Blind Creek, with an initial tranche of 1,000,000 common shares due upon TSX-Venture acceptance of the agreement and the final tranche of 1,000,000 common shares 30 months later. In the event that the Property is placed into Commercial Production Eagle Plains shall be entitled to a royalty of 2% of net smelter returns with a 1% buyback to 1% upon payment of \$1,000,000 to Eagle Plains, and a second option to purchase the remaining 1% NSR upon payment of \$7,000,000.

On August 1, 2017, the Company completed a tri-party agreement with Shea Creek Joint Venture partners AREVA Resources Canada Inc. ("AREVA") and UEX Corporation ("UEX") whereby the companies will acquire certain mineral dispositions in the Shea Creek area of northeastern Saskatchewan from Eagle Plains. AREVA and UEX will reserve in Eagle Plain's favour a 2% Net Smelter Royalty ("NSR") on all future production relating to the dispositions. This royalty can be reduced at any time by paying Eagle Plains \$1,000,000. This royalty agreement strengthens Eagle Plain's exposure to benefitting from potential future production in various uranium camps in Saskatchewan including Patterson Lake South area, where the company owns NSR interests on claims now held by Cameco Corporation and ALX Resources, as announced by EPL on March 3, 2016.

Outlook

Eagle Plains' management has maintained its strategy of continuing research and acquisitions and anticipates continued success in attracting joint-venture participation to further advance projects. By doing so, the Company maintains a very healthy treasury and minimizes exploration risk. 2011 saw a dramatic increase in the Company's deal flow, with the attendant increase in exploration activity on our mineral projects that year. Downward market sentiment over the past few years has resulted in the reverse effect. However, events such as the successful merger in 2011 of NovaGold Resources and Copper Canyon Resources (an EPL spin-out company) and the discovery of significant mineralization at Iron Range in late 2010 are reminders that the methodology employed by management is sound. We will continue to hold the course.

June 30, 2017

Outlook – continued

Eagle Plains will continue to seize opportunities as they are presented. TerraLogic Exploration Inc., a 100%-owned subsidiary of Eagle Plains continues to successfully market its experienced personnel, technical abilities and equipment to third-parties, and is functioning well as an independent contracting unit. This serves two important purposes - it not only avails a full complement of technical capabilities to Eagle Plains, but also provides substantial revenues through operations.

As markets and investment sentiment for junior mining and exploration continue to improve, Eagle Plains has increased its exploration spending on many of its diverse projects and will endeavour to enhance value through new acquisitions and joint-ventures with third-parties. Ultimately our biggest reward will be in discovery itself. TerraLogic has seen significant increases in its workload; both for Eagle Plain's projects and with unrelated third-parties. We look optimistically forward to what the future may bring.

On behalf of the Board of Directors

“Timothy J. Termuende”

Timothy J. Termuende, P.Geo.
President and CEO