



EPL : TSX-V

Eagle Plains Resources Ltd.

MT. POLLEY WEST PROJECT

Projection - NAD 1983 UTM Zone 10N
Nominal Scale - 1 : 100 000

Date - June 2024
9663 Ha.

Grab samples from the Morehead Ck. intrusion assayed up to 0.85% Cu and 1.125 g/t Au. A 48m drill hole, LL-85-2, intersected 9.1m of 0.104 g/t Au & 675 ppm Cu.

BGM / Osisko: QR Deposit & Mill

Historical "Prior Channel" placer operation.

ML Monzonite Stock: Two RC holes in 1992 intersected anomolous Cu over >20m in chlorite, epidote, silica altered volcanics with disseminated pyrite. Not assayed for Au.

ML Monzonite Stock: Grab samples proximal to intrusive assayed 0.648 g/t Au, 0.32 g/t Au and 1.36% Cu. (093A 118)

Generalized outline of magnetic high from 2022 airborne survey. Majority of anomaly is covered by till. Known exposures of monzonite has strong correlation with magnetic highs.

Trench #5 (1999) assayed 1.12% Cu over 35m including 7.12% over 5m adjacent to a NW trending fault, never drill tested.

Generalized outline of anomolous K/Th in airborne radiometrics (1993). Possibly indicitive of mineralized intrusive trend.

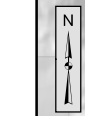
Imperial Metals: Mount Polley Mine Complex
Reserves:
54 Mt 0.34% Cu, 0.32 g/t Au, 0.90 g/t Ag
Measured and Indicated Resource:
202 Mt 0.29% Cu, 0.30 g/t Au, 0.53 g/t Ag
Source: Imperial Metals website, Reserves and Resouces June 2023

5630000

5630000

5620000

5620000



2023 Till Sample - Gold Grains

Total (Pr, Mo, Re)

- PrGG - Pristine (Pr)
- MoGG - Modified (Mo)
- ReGG - Re-shaped - (Re)

↑ Generalized Ice Flow Direction

Total Magnetic High 2022 - Generalized
K/Th Radiometrics 1993 - Generalized

Major Road

